



29 Chorley Hall Lane, Alderley Edge, SK9 7EU

mosley jarman &

29 Chorley Hall Lane, Alderley Edge, SK9 7EU

Offers Over £450,000

- Period End Terrace
- Two Reception Rooms
- Two Double Bedrooms
- Three Bathrooms
- Garage & Driveway
- No Onward Chain



29 Chorley Hall Lane, Alderley Edge, SK9 7EU

Offers Over £450,000



Computer Generated Image
- Artists Impression

OVER 1500 SQFT - Basement, Loft, Garage and Parking!

29 Chorley Hall Lane is a deceptively spacious period END terrace property located in the heart of Alderley Edge, within walking distance to the village amenities which has the advantage of an attached GARAGE with a DRIVEWAY parking space.

To the ground floor is an entrance porch with further door to hallway. Lounge with window to the front, to the rear is a further reception room with box bay window and inset gas fire. Kitchen with range of shaker style wall and base units with integrated Neff appliances, stable door leading out to the garden. Downstairs WC, Utility area leading to the attached garage. To the lower ground floor is a large room with window to the front and a en-suite shower room. To the first floor are two double bedrooms (both with fitted robes) each having a modern newly fitted ensuite. Loft space with Three Velux windows.

Outside there is a garden frontage, with gate to private storage area, whilst to the rear is a private SOUTH facing courtyard garden.

There is an attached garage with electric up and over door and a driveway.

Offered to the market with the advantage of NO ONWARD CHAIN

Important Information

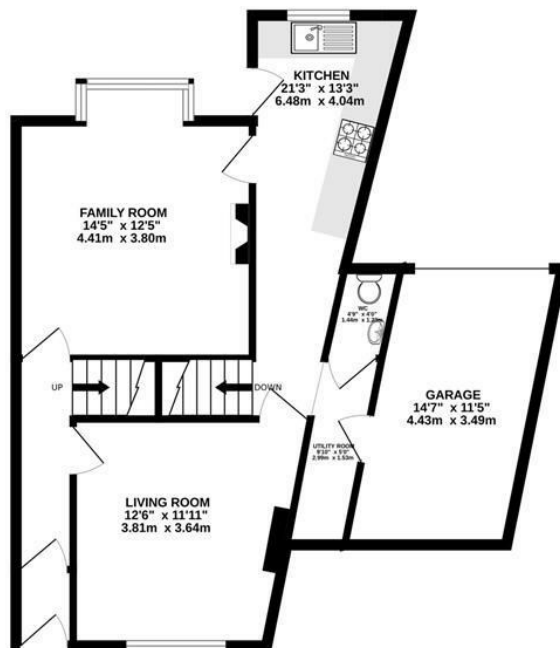
-

What 3 Words - [///audio.once.jumpy](#)

Council Tax - Cheshire East (Band D)



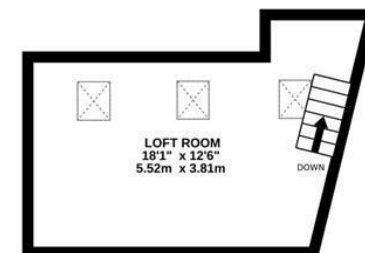
GROUND FLOOR
660 sq.ft. (61.4 sq.m.) approx.



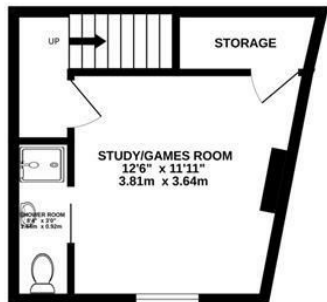
1ST FLOOR
480 sq.ft. (44.6 sq.m.) approx.



2ND FLOOR
180 sq.ft. (16.7 sq.m.) approx.



BASEMENT
220 sq.ft. (20.4 sq.m.) approx.



TOTAL FLOOR AREA : 1540 sq.ft. (143.1 sq.m.) approx.

Whilst every attempt has been made to ensure the accuracy of the floorplan contained here, measurements of doors, windows, rooms and any other items are approximate and no responsibility is taken for any error, omission or mis-statement. This plan is for illustrative purposes only and should be used as such by any prospective purchaser. The services, systems and appliances shown have not been tested and no guarantee as to their operability or efficiency can be given.

Made with Metropix ©2026